

Product datasheet



sHLA-C*12:03bio

Cw*12:03, Cw*1203, C*1203, C1203
Cw1203, C*12, C12, Cw*12, Cw12, -

Serological Name	-
Peptide Load	Endogenous
Modification	Unmodified
Conjugation	Biotin
SKU	C1203bio

Product Description

Allele Name	C*12:03 B2m
HLA Class	HLA Class I
HLA Gene Locus	HLA-C
Alternative Allele Name A Chain	Cw*12:03, Cw*1203, C*1203, C1203, Cw1203, C*12, C12, Cw*12, Cw12, -
Alternative Allele Name B Chain	-
Description	Recombinant, truncated Class I soluble Human Leukocyte Antigen (sHLA), naturally folded and glycosylated, loaded with endogenous peptides.
Serological Name	-
Serological Split	-
Bw4/Bw6 Assignment	Bw6
Bw4/Bw6 Sequence	SLRNLRG
Allele Frequency [World Population]	
A chain	3.9%
B chain	-

Associated products

[C1203](#)
[C1203pe](#)

Product Specification

Product name	HLA-C*12:03bio
HLA Species	Human
Host Cell Line Species	Human
Clone Designation	H4
Tail Specification	VLDL
Peptide Load	Endogenous
Modification	Unmodified
Conjugation	Biotin
Complexity	Monomer
Protein Format	Recombinant, truncated, soluble, non-modified, biotinylated, endogenously loaded
Storage Temperature	4 °C (This product should be stored undiluted)
Form	Liquid
Concentration	300.0 µg/µl
Formulation	PBS/0.02% Sodium Azide
pH	7.4
Purification Method	Affinity Chromatography
Grade	Research Use Only [RUO]
Authentication Verification	Sequence Based Typing

Protein Sequences

Alpha Chain Sequence	CSHSMRYFYT AVSRPGRGEP RFIAVGYVDD TQFVRFSDSA ASPRGEPRAP WVEQEGPEYW DRETQKYKRQ AQADRVSLRN LRGYYNQSEA GSHTLQWMYG CDLGPDGRLR RGYDQSAYDG KDYIALNEDL RSWTAADTAA QITQRKWEAA REAEQWRAYL EGTCVEWLR R YLENGKETLQ RAEHPKTHVT HHPVSDHEAT LRCWALGFYP AEITLTWQRD GEDQTQDTEL VETRPAGDGT FQKWAAVVVP SGEEQRYTCH VQHEGLPEPL TLRVSVSTDD DLA
Beta Chain Sequence	IQRTPKIQVY SRHPAENGKS NFLNCYVSGF HPSDIEVDLL KNGERIEKVE HSDLSFSKDW SFYLLYYTEF TPTEKDEYAC RVNHVTL SQP KIVKWRDRM

Related Products

[C1202bio](#)
[A0201bio](#)
[A0301bio](#)
[B0702bio](#)

Applications

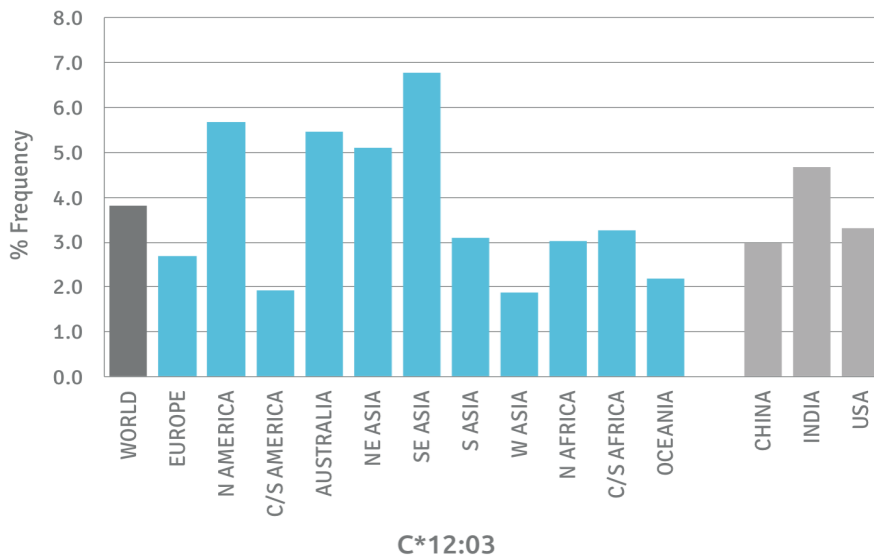
HLA Sandwich ELISAs
 HLA Direct ELISAs
 HLA-Sera Antibody Assays
 HLA Controls in ELISA Assays
 HLA Assay Standards
 HLA Blocking Assays
 HLA Neutralizing Assays
 HLA Competition Assays
 HLA Bead Assays
 HLA Immunization Procedures

Recommended Antibodies

W6/32
 Anti-B2m

Allele Frequency

Worldwide Allele Frequency



Please note:

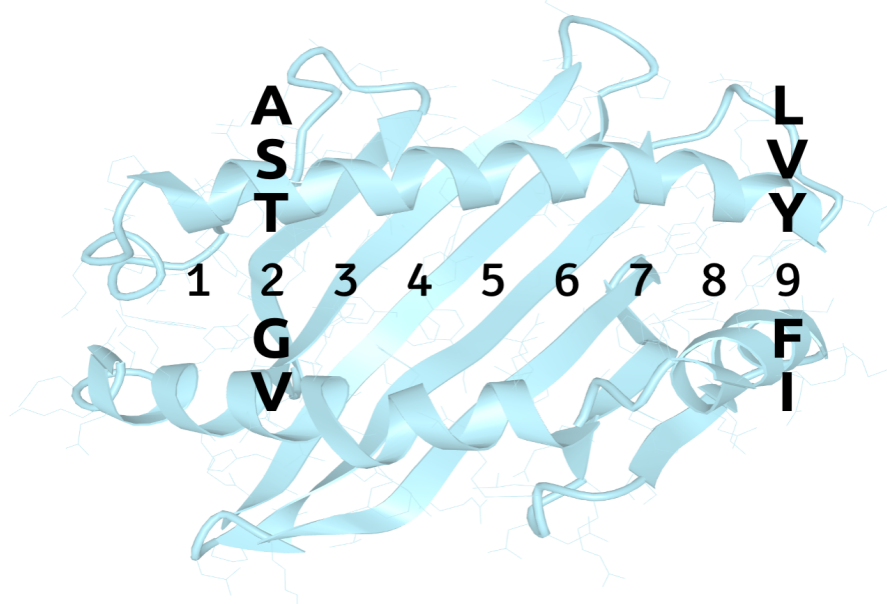
ALL PRODUCTS ARE FOR RESEARCH USE ONLY. NOT FOR COMMERCIAL USE IN DIAGNOSTIC PROCEDURES.
 For more information, please visit our Policies section on our website. For licensing inquiries, please contact

licensing@hlaprotein.com



Motif

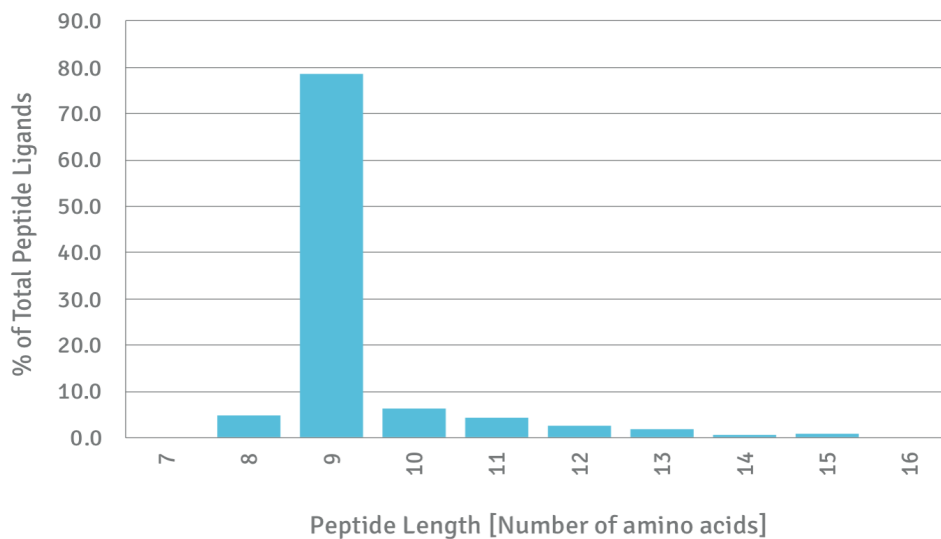
C*12:03 BINDING MOTIF



Length Distribution

HLA Length Distribution

C*12:03



Please note:

ALL PRODUCTS ARE FOR RESEARCH USE ONLY. NOT FOR COMMERCIAL USE IN DIAGNOSTIC PROCEDURES.

For more information, please visit our Policies section on our website. For licensing inquiries, please contact

licensing@hlaprotein.com

Eplet Assignments

C*12:03

Eplet	Polymorphic Residues	Antibody Reactivity
1C	1C	
9Y	9Y	
11AV	11A12V	
65QKR	65Q66K69R	Yes
66K	66K	
69RA	69R73A	
73AS	73A77S	
76VRN	76V79R80N	Yes
76VS	76V77S	
77S	77S	
77SRN	77S79R80N	
80N	80N	Yes
95L	95L	
97W	97W	
99Y	99Y	
103L	103L	
113YD	113Y114D	
116S	116S	
152E	152E	
152RE	151R152E	
156WA	156W158A	
163T	163T	
184H	184H	
193PV	193P194V	Yes
194V	194V	